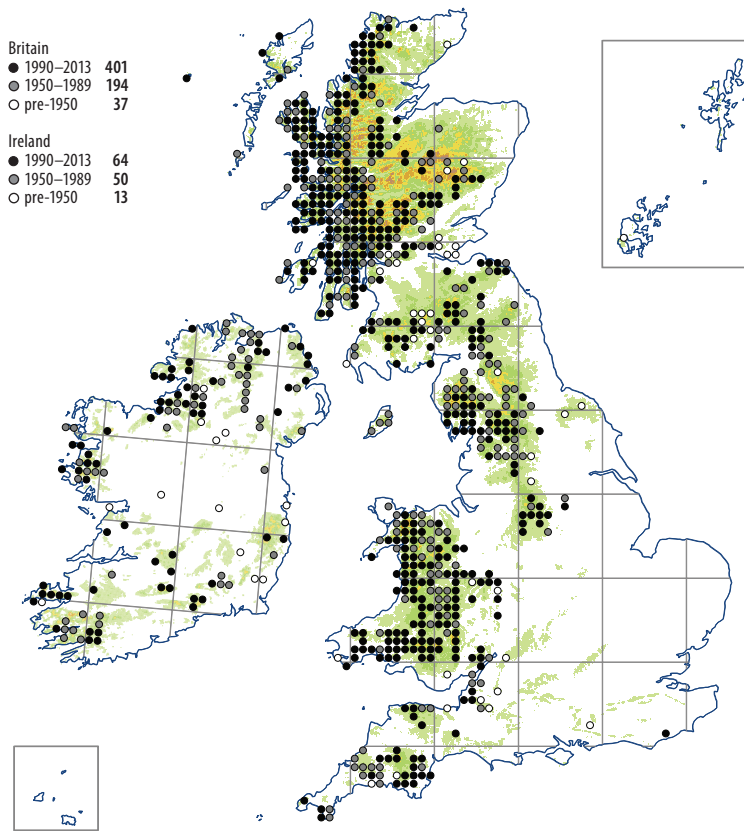


Metzgeria conjugata



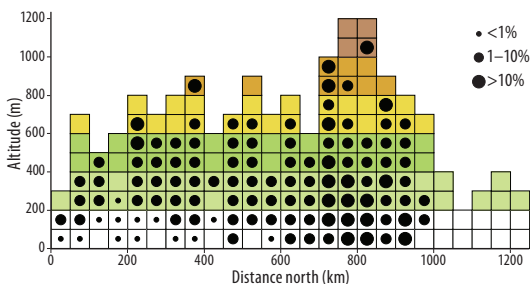
A species of moist, shady rocks, most of the records being from ravines, sheltered river valleys and cliffs. It grows in pure patches or creeping among mosses on a wide variety of rock types, especially siliceous rock but occasionally limestone. *Saccogyna viticulosa*, *Frullania tamarisci*, *Lejeunea cavifolia*, *L. patens*, *Plagiochila porelloides* and *Amphidium mougeotii* are typical associates. It also occurs, more rarely, on tree trunks and roots, notably on mature ash trees in deep, wooded valleys. Altitudinal range: 5–690 m.

Autoicous, usually fertile; capsules are frequent, April to October. Gemmae are absent.

European Boreo-temperate. Most of Europe except the north-east and far north; Macaronesia; southern Africa, Madagascar, Mauritius; N, C and S America.

N.G. Hodgetts, rev. S.D.S. Bosanquet

The separation of poorly grown colonies of *Metzgeria conjugata* from loose patches of *M. furcata* is not straightforward in the field, and the map may contain some errors.



▼ Coed Aberartro, Merioneth, 2014. Sam Bosanquet

