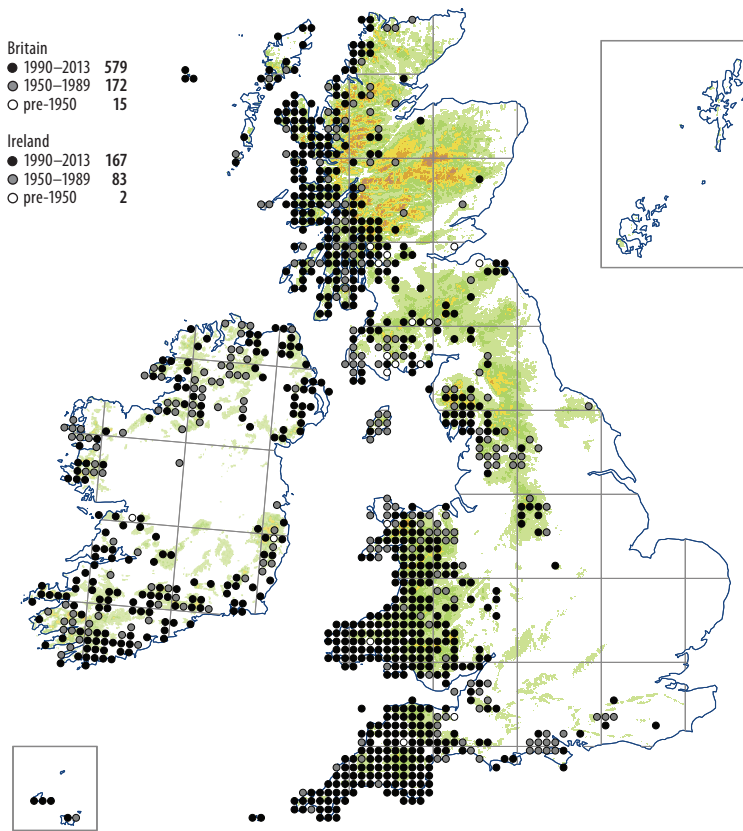


Lejeunea lamacerina



Most common growing as extensive patches appressed to rock, or over other bryophytes (e.g. *Heterocladium heteropterum*, *Hyocomium armoricum* and *Thamnobryum alopecurum*), in damp, shaded situations such as at or near water level on wet boulders and tree roots in wooded valleys and streams. Regularly found on moist, sometimes dripping rock walls in damp, humid, wooded ravines and by waterfalls, and in shaded recesses between boulders in cascades and on damp, block-strewn slopes where water percolates. Also in dripping sea caves, on sheltered rocks by the sea, on shaded bridge supports in wooded river valleys, on trees and decaying logs in woods, and on soil banks by shaded streams. Associates include *Lophocolea fragrans*, *Riccardia chamedryfolia* and, more rarely, *Jubula hutchinsiae*, *Porella pinnata*, *Fissidens bryoides* var. *cespitans* and *F. polyphyllus*. It is generally found in damper, more shaded

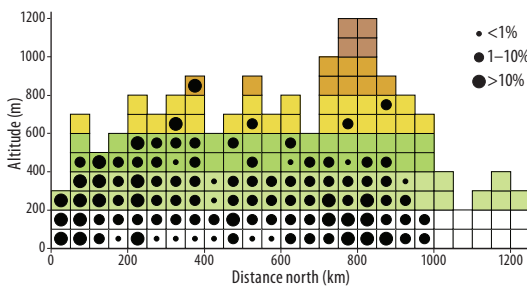
situations than *Lejeunea cavifolia* or *L. patens* and is less base demanding than *L. cavifolia*. Altitudinal range: 0–450 m.

Lejeunea lamacerina is considerably better recorded than in the 1991–1994 Atlas but there is no evidence of a range expansion.

Autoicous; usually fertile, capsules are common, February to November.

Lejeunea lamacerina var. *azorica* gradually fell out of favour between the 1950s and 1990s and all plants are now referred to a single taxon. Variability results in some confusion with both *L. cavifolia* and *L. patens* in the field.

Hyperoceanic Southern-temperate. Spain, Portugal, Italy, France, Switzerland, Germany, Belgium, Norway; Macaronesia; Turkey; N America (subsp. *gemminata* R.M. Schust.); Brazil, Tristan da Cunha.



H.J.B. Birks