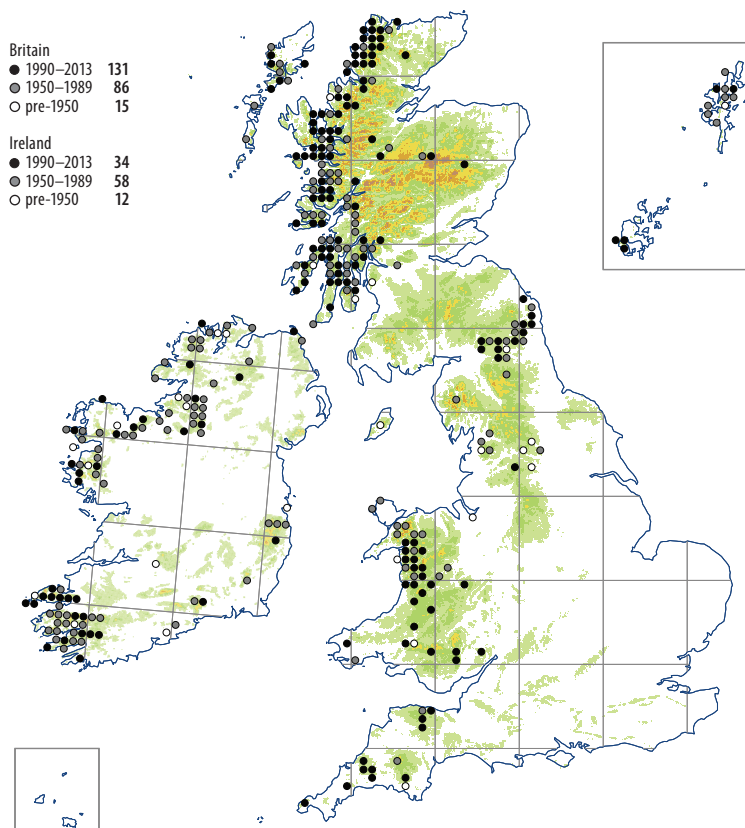


# *Lepidozia cupressina*

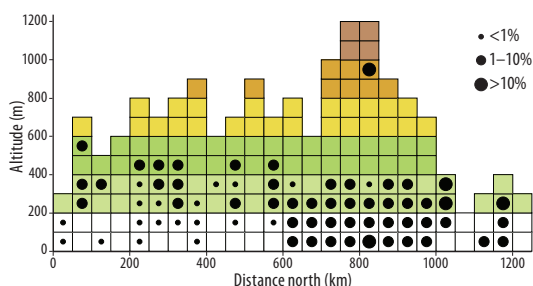


A characteristic though rather local species of rocky oak woodland, particularly in the west, where it can form large, prominent cushions on the tops of shaded boulders and outcrops; less often it is found on tree bases, stumps, rotting logs and sometimes soil. *Bazzania trilobata* is one of its common associates. It also occurs outside woodland in gullies, block screes and other sheltered rocky ground. Altitudinal range: 5–700 m.

Hyperoceanic Southern-temperate. Very local in W Europe outside Britain and Ireland; recorded in the Faeroes, Norway, Germany, France, Luxembourg, Spain and (doubtfully) Bulgaria; also in the Azores, Canary Islands and Madeira. Elsewhere, the *Lepidozia cupressina* complex is represented in the Caribbean region, S America and Africa.

T.H. Blackstock

Dioicous. Often fertile; mature sporophytes are unknown.



▼ Buckstone Wood, Staunton, West Gloucestershire, 2014. Richard Lansdown

