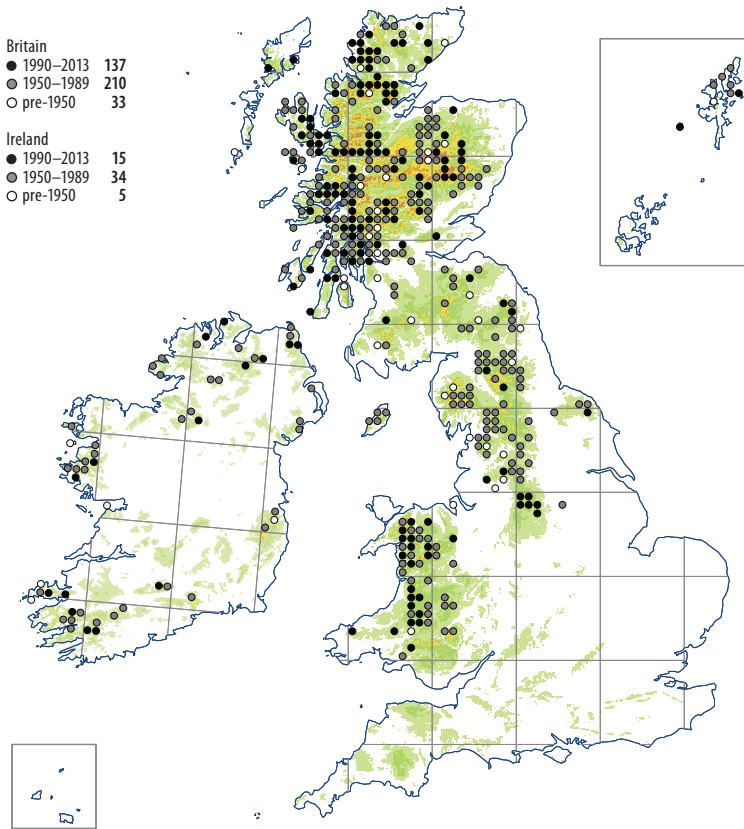


# Solenostoma obovatum

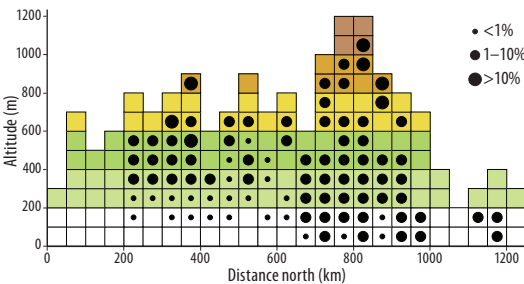


This species is characteristic of rocks and boulders by streams, often growing in gullies and ravines where it is embedded in detritus near the water level. Associates include *Hygrobiella laxifolia*, *Scapania undulata*, *Solenostoma paroicum*, *Dichodontium pellucidum*, *Isoetecium holtii* and *Racomitrium aciculare*. It also occurs widely on dripping rocky banks and moist cliff ledges. The substrate varies from acid to moderately base-rich. Altitudinal range: 25–1095 m.

European Boreal-montane. Widespread in Europe, becoming montane southwards and absent from the Mediterranean region. Turkey, Russia, China; northern and western N America.

T.L. Blockeel, rev. S.D.S. Bosanquet

Paroicous. Fertile plants and capsules are common, ripe April to August. Gemmae are unknown.



▼ Lickeen Wood, Glencar, South Kerry, 2014. Rory Hodd

