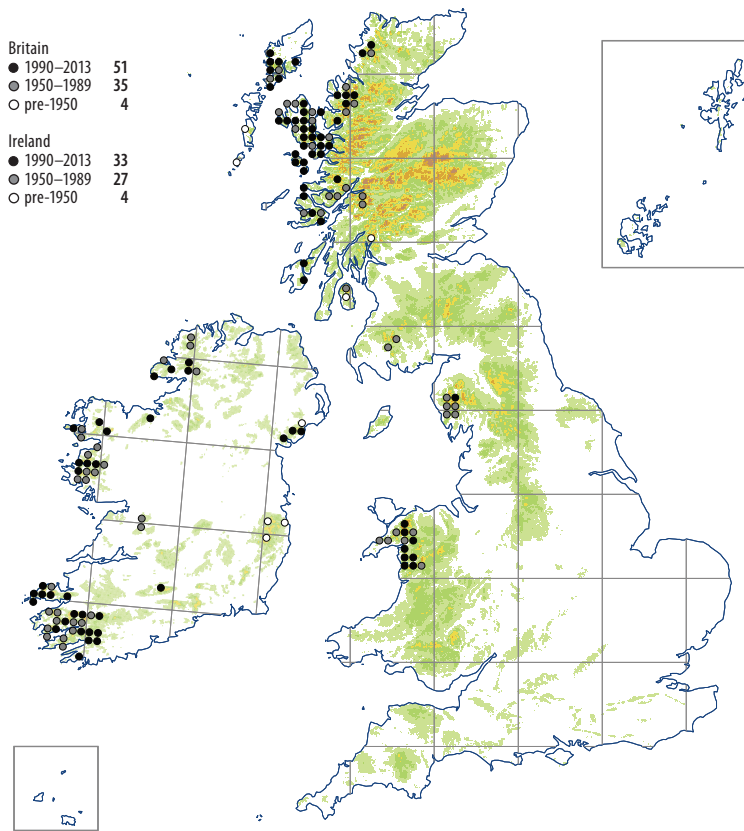


# Campylopus setifolius



A robust moss that is probably most frequent in wet heath or heathy grassland on north or north-east facing slopes, often at the base of crags where there is some flushing from above. There are also numerous sites on ledges in ravines, often where there is a local increase in humidity by spray from a waterfall or dripping water from above. It can also occur as part of the hepatic mat community on thin organic soil in crevices in scree under *Calluna vulgaris* with species such as *Herbertus hutchinsiae*, *Pleurozia purpurea*, *Scapania gracilis*, *Breutelia chrysocoma* and, more rarely, *Mastigophora woodsii* and *Scapania ornithopodioides*. *Calluna vulgaris* is a constant associate but it is only occasionally dominant, and the frequency of *Agrostis vinealis*, *Carex binervis*, *Nardus stricta*, *Molinia caerulea* and *Potentilla erecta* nearby gives a more accurate picture of the grassy heath in which *Campylopus setifolius* usually occurs. In the Hebrides it is

occasionally found in mire-like vegetation on deeper peat where it may sometimes occur with *C. shawii*. Altitudinal range: 30–730 m.

Dioicous, male plants are very scarce and known only from Skye and the adjacent mainland; reports of capsule-bearing plants are unconfirmed.

The species has a rather patchy distribution at both a hectad and more local scale. It can easily be overlooked as *C. atrovirens* and is certainly under-recorded in the north and west of Scotland, but the distribution shown is substantially correct.

Hyperoceanic Temperate. Outside Britain and Ireland known only from N Spain where it has not been seen since 1934.

G.P. Rothero

