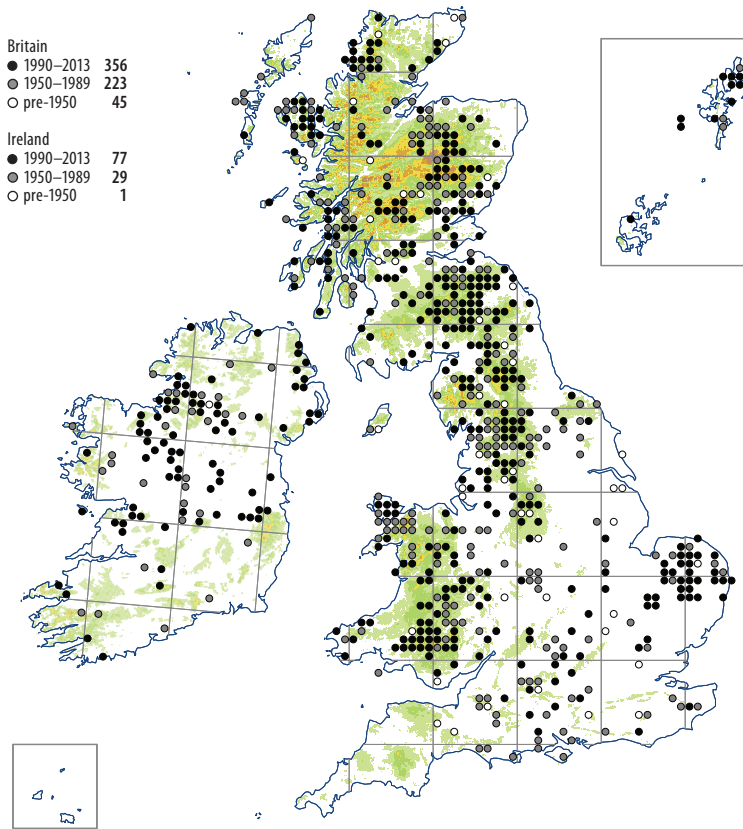


# Plagiomnium elatum



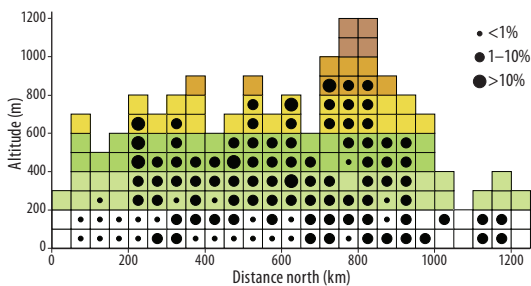
As scattered shoots or patches, sometimes extensive, in wet calcareous fens and limestone flushes with mosses such as *Campylium stellatum*, *Philonotis calcareo* and *Scorpidium* spp.; it also occurs widely in springs, flushes and seepages that are only slightly base-rich or mineral-rich, often on moorland and under rushes, associated with *Lophocolea bidentata*, *Brachythecium rivulare* and *Calliergonella cuspidata*, sometimes with *Sphagnum teres* and *S. warnstorffii*. Less common habitats are in wet woodland, including alder and willow carr, and on alluvial sand under trees by swift-flowing rivers with base-rich water. It has also been recorded from reed swamp and marshes where the vegetation is tall but not too dense. Altitudinal range: 0–850 m.

It was poorly understood before the 1960s and therefore under-represented in the 1991–1994 Atlas. This explains the greater density of records on the current map.

Dioicous; capsules are unknown with certainty in Britain or Ireland.

It is easily confused with *Plagiomnium affine*, *P. ellipticum* and small forms of *P. undulatum* and there may be some inaccuracies on the map.

European Boreo-temperate. Europe north to Iceland, N Fennoscandia and Arctic Russia, but absent from much of the Mediterranean region and mainly in the mountains. Reported from N Africa, Turkey, Near East, Georgia, Iran to Kazakhstan.



T.L. Blockeel