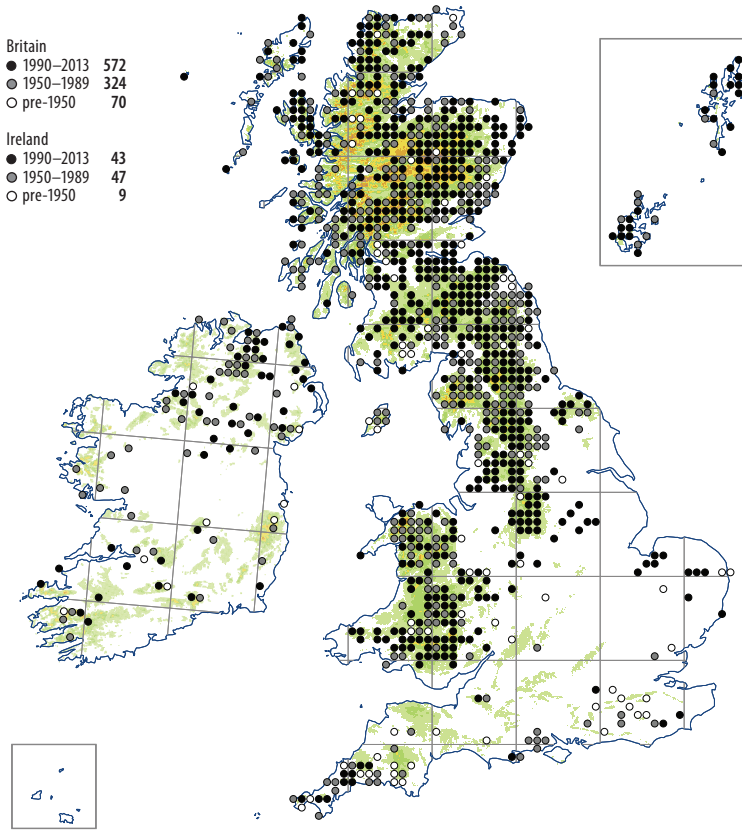


# Sanionia uncinata



For a moss that is not universally common, *Sanionia uncinata* occurs in an extraordinary range of habitats. In many districts, especially in the lowlands, it is most often found as an epiphyte, in humid places such as carr woodland, sheltered river banks and marshes, where the most frequent host trees are willows. In damp woodland it may also occur on old logs. It is frequent as a rupestral moss, especially in upland districts, growing on thin soil on boulders in sheltered habitats such as woodland and stream banks, and occasionally in more open places such as turfy rock ledges and old sheltered walls. Other terrestrial habitats include gravelly turf and streambanks, unimproved pasture, and dry calcareous grassland, the latter sometimes in long-disused mine workings and diggings with *Ctenidium molluscum* and *Ditrichum gracile*. In the mountains it occurs in montane turf, in areas of late snow lie, and on

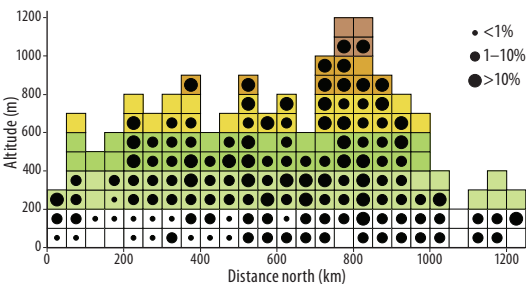
flushed base-rich rock ledges. In many areas, particularly in southern regions, its occurrence in terrestrial habitats is sporadic and it is often absent from apparently suitable sites. Altitudinal range: 0–1230 m.

There has been a slight upward trend in records since 1990, and this may be partly due to its increased occurrence as an epiphyte, especially in the English Midlands.

Autoicous; capsules are frequent, mature in spring and summer, but rarely if ever produced in dry habitats such as calcareous turf.

Recent molecular-based studies by Hedenäs (2010c, 2012a) suggest that the phylogenetic history of *S. uncinata* in Europe is complex and different lineages are present.

Circumpolar Boreo-arctic montane. Widespread in Europe, north to Svalbard, and south to the mountains of the Mediterranean region and Caucasus. Macaronesia, N Africa (Morocco). SW Asia (Turkey and Iran to Afghanistan). Distributed in Arctic and boreal regions across the Northern Hemisphere; and in the northern part of the broadleaved forest zone; also in mountain ranges further south. Present in the tropics in E Africa and the Andes. In the Southern Hemisphere in southern S America, southern Africa, Australia, New Zealand and Antarctica.



T.L. Blockeel