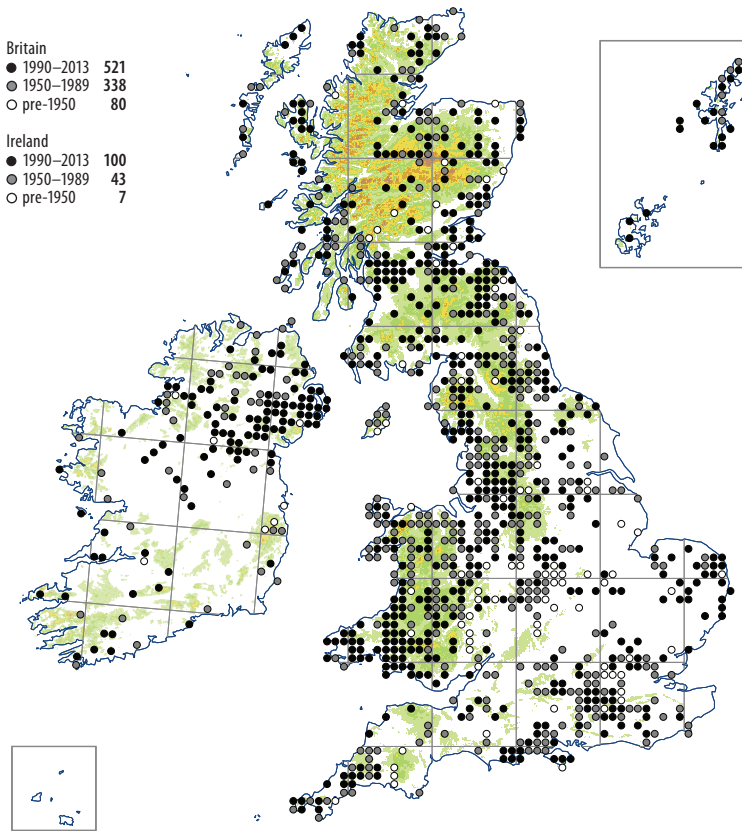


Calliergon cordifolium



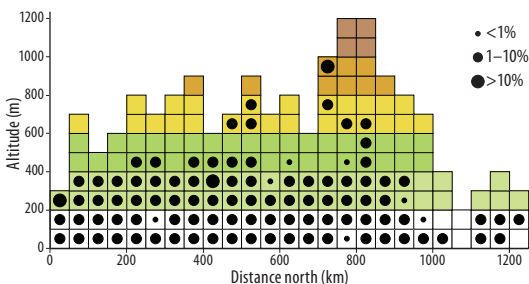
This mildly calcifuge moss of wet and sometimes rather squalid places normally grows in the shade of vigorous higher plants, but is also found in rills and swampy flushes in the open, among sedges and rushes. Typical habitats are swamp woodland, especially under alder and willows, lake margins, quaking vegetation rafts, 'moats' at the margins of bogs, ditches on moors, hollows in wet marshy pastures, dune slacks, and pools in areas of mineral workings. It often occurs where there are large seasonal fluctuations of the water-table, growing over decaying leaves of trees, grasses or *Typha latifolia*. Its habitat overlaps to some extent with that of *Straminergon stramineum*, but *Calliergon cordifolium* is much more shade-tolerant and tends to occur in places where nutrient levels, but not necessarily the pH, are higher. It is occasionally associated with *Sphagnum* species, and with *Brachythecium rivulare*, *Calliergonella cuspidata*

and *Plagiomnium ellipticum*, but sometimes it is the only bryophyte present. Altitudinal range: 0–910 m.

Dioicous; capsules are occasional, mature in late spring and early summer.

Although a conspicuous moss, it was under-recorded in the 1991–1994 Atlas. This is particularly evident in areas such as S Wales and N Ireland, where coverage is now much more complete.

Circumpolar Boreo-temperate. Widespread in Europe, rather rare in the Arctic, from Iceland and N Fennoscandia southwards to Spain, Tuscany and the Balkan mountains. Turkey, Caucasus. Circumboreal, across northern Asia to Japan, south to the Himalaya, and in N America south to Colorado and North Carolina.



M.O. Hill, rev. T.L. Blockeel