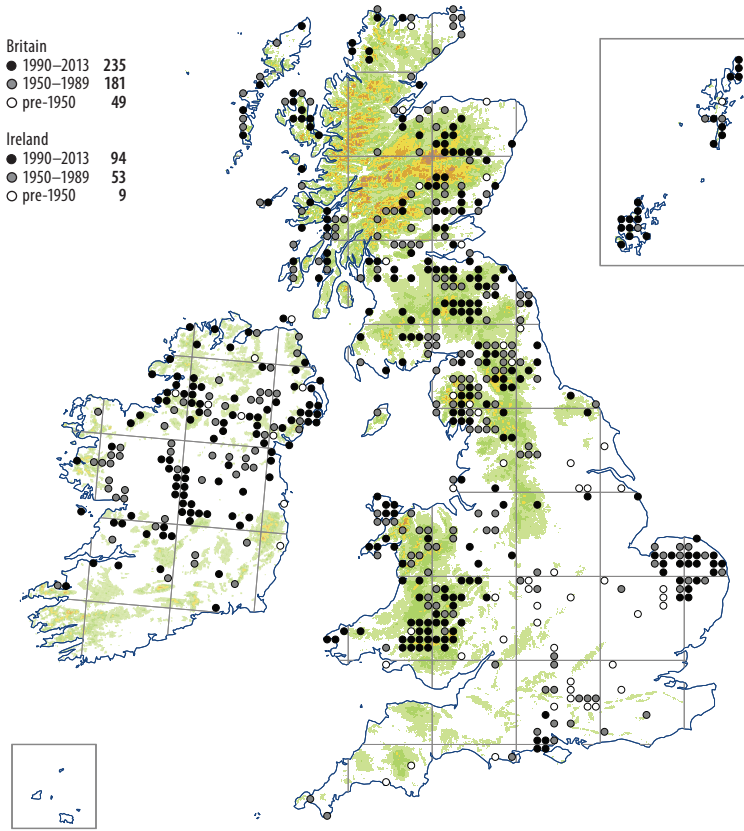


# Calliergon giganteum



**A** plant of wet, open fens, waterlogged hollows, swampy flushes, boggy streambanks and lake margins, confined to sites that are calcareous or at least moderately base-rich, but occasionally found in acid environments where base-rich ground-water upwells in springs. Although sometimes found in bushy places, it is less tolerant of shade than *Calliergon cordifolium* and generally occurs in the open, often among *Carex rostrata* or among large grasses and herbs in fens. Its other associates are many and varied, including *Carex diandra*, *C. limosa*, *Potentilla palustris*, *Calliergonella cuspidata*, *Campylium stellatum*, *Scorpidium cossonii*, *S. scorpioides* and *Sphagnum contortum*. Altitudinal range: 0–585 m.

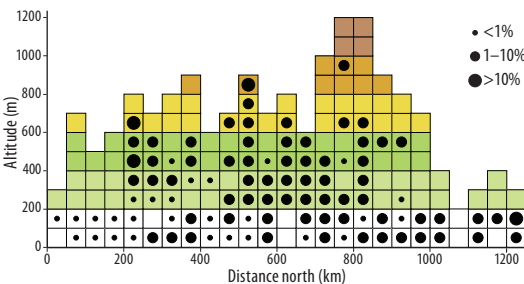
Like several other rich-fen species, *C. giganteum* is well represented in Pleistocene deposits and was undoubtedly more abundant in the past (Dickson, 1973). It has undergone

a significant decline in lowland parts of England from the loss of wetland habitat.

Diocious; capsules are very rare, mature in summer.

It has certainly been over-recorded because of confusion with *C. cordifolium*. Some dubious records have been eliminated from the map, but it is likely that others remain; these should be few enough not to distort the picture of either its frequency or its distribution.

Circumpolar Boreo-arctic montane. Widespread in cool and cold regions of Europe north to Iceland and N Fennoscandia, extending south in the mountains to Spain, N Italy and the Balkan states. Turkey, Caucasus. Circumboreal, south to Kyrgyzstan and C China in Asia and Colorado in N America. Also in southern S America and New Zealand (Hedenäs, 2003).



M.O. Hill, rev. T.L. Blockeel