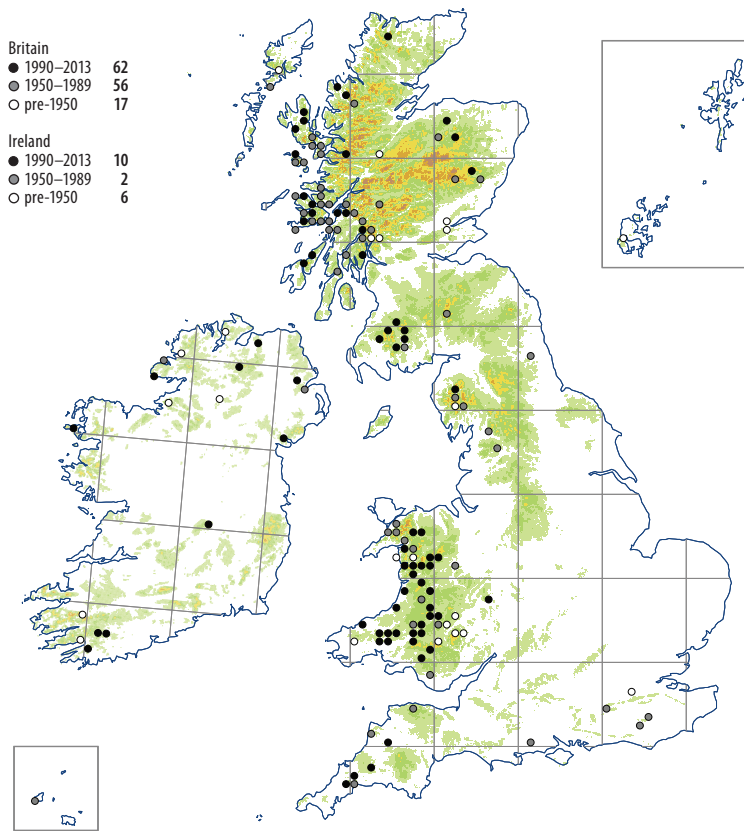


Campylopus subulatus



A locally common species of unshaded acid gravelly and sandy places. Habitats include tracks, paths, lay-bys, forest roads, disused quarries, old tarmac on roadsides, and stony or gravelly river margins. More rarely it is found in rock crevices by sheltered coastal inlets, on stony reservoir banks, thin soil on rocks and rock ledges, and fine mountain scree. Common associates in gravelly places are *Racomitrium ericoides* and bulbiferous species of *Pohlia*. On little-used tracks it also grows with *Nardia scalaris*, *Scapania irrigua*, *Archidium alternifolium*, *Calliergonella cuspidata*, *C. lindbergii*, *Philonotis fontana* and *Pogonatum urnigerum*. Altitudinal range: 5–730 m.

A surge of records since 2000 is probably explained by systematic recording in parts of Wales and Ireland.

Dioicous; capsules are very rare, only once recorded in Britain, and equally rare elsewhere. Vegetative propagation is by means of deciduous shoot tips.

Because of its small size and nondescript appearance it is probably overlooked and therefore under-recorded. However its near absence from the Pennines and other parts of C and E England appears to be real.

Suboceanic Temperate. In W and C Europe from the Iberian Peninsula north to Iceland and C Norway, eastwards as far as Sweden, Germany, Austria and Serbia. Macaronesia. Turkey. Himalaya, E Asia, Japan, and very rarely in western N America. Reports from elsewhere may belong to other species.

M.F.V. Corley, rev. T.L. Blockeel

