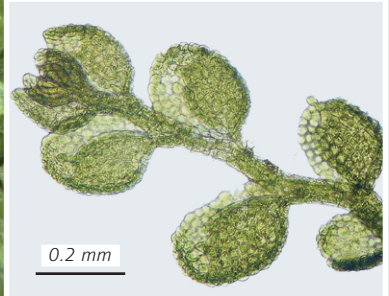
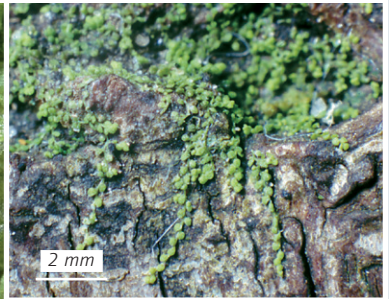
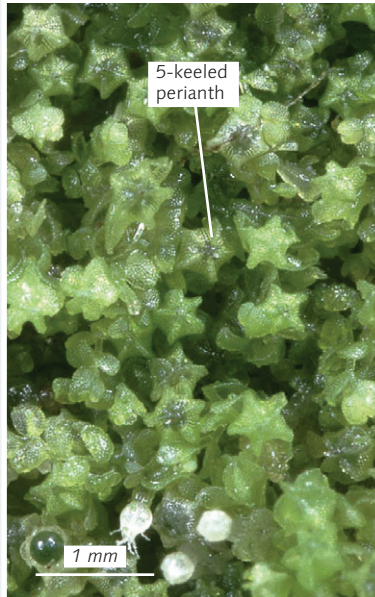
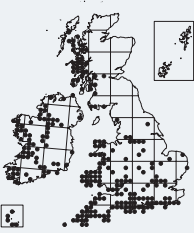


# *Cololejeunea minutissima*

Minute Pouncewort

Key 41



**Identification** The perianths of *C. minutissima*, which look like 5-pointed stars emerging from dense patches of slender (up to 4 mm long and 0.5 mm wide) shoots are the most striking character of this pale green leafy liverwort. The leaves are minute (up to 0.25 mm long) and rounded, with a lobule almost as big as the lobe. There are no underleaves. Individual shoots look like a string of beads.

**Similar species** *C. calcarea* (p. 225) has longer, pointed leaves and does not grow on trees. *Microlejeunea ulicina* (p. 220) is similar, and grows in similar habitats, but has more elongated leaves, forms straggling mats weaving through other bryophytes rather than dense patches, and lacks perianths in Britain. It also has underleaves. *Aphanolejeunea microscopica* (p. 227) has longer, narrower leaves, and only rarely produces perianths, which do not look like stars.

**Habitat** *C. minutissima* grows on sheltered tree trunks in humid places, and much more rarely on rock. It is markedly coastal and southern, but there have been more inland records in recent years, and the species has crept northwards along the west coast as far as the Outer Hebrides.