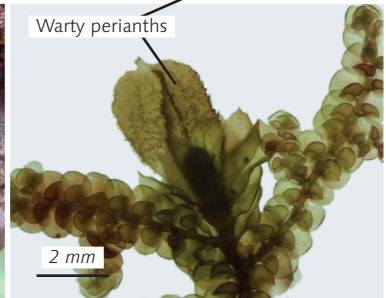
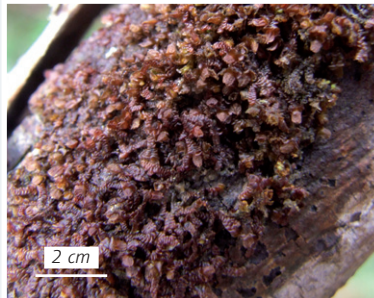
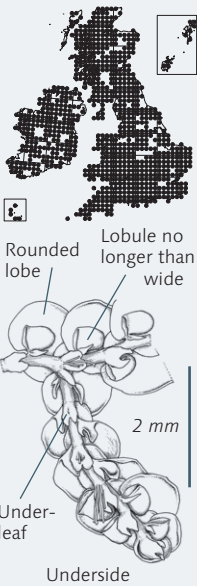


# Frullania dilatata

Dilated Scalewort

Key 44



## Identification

This greenish or brownish, subpinnately branched leafy liverwort has shoots 0.7–1.5 mm wide, with leaves up to 1 mm wide and 1.2 mm long. It has rounded lobes to the leaves, and large, helmet-shaped lobules which are about as wide as they are long. The lobes lack modified cells. Underleaves are present. Dioicous and frequently fertile. Male shoots look relatively narrow, and female shoots have conspicuous, warty perianths.

## Similar species

*Frullania* as a genus is so distinctive that *F. dilatata* can only be confused with other species of *Frullania*; however, all the other British species have smaller lobules, which are longer than they are wide. *F. tamarisci* (p. 211) has a pointed lobe with a line of modified cells. *F. teneriffae* (p. 212) is a robust species with a pointed lobe. Other species in the same genus are smaller, darker, have modified cells in the lobes, and more often grow on rock.

## Habitat

A very common liverwort on trees and shrubs in most of Britain. It grows on a variety of trees, especially ash (*Fraxinus excelsior*), willow (*Salix*), poplar (*Populus*), etc., in well-lit surroundings, but can also occur on rock and in turf, especially in coastal areas.