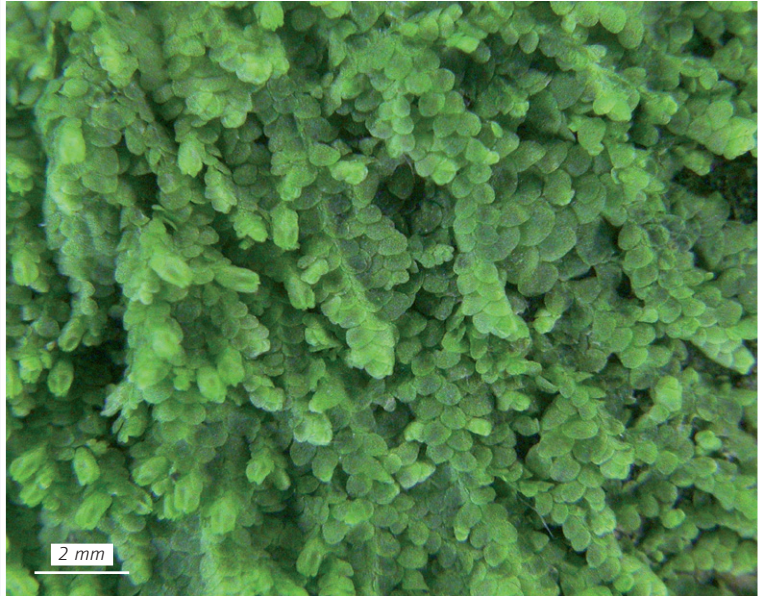
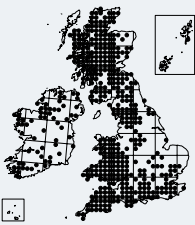


Lejeunea cavifolia

Micheli's Least Pouncewort

Key 42



Identification This small (shoots up to 2 cm long and 0.5–1.5 mm wide), delicate, pale or dark green leafy liverwort has a slightly inflated, pouch-like lobule that is much smaller than the broadly rounded main leaf lobe. It has a row of large, rounded, often more or less overlapping, bilobed underleaves. The lobule is relatively small, and the underleaves are about 2 or 3 times the width of the stem. Often fertile, with small, 5-keeled perianths. It is wise to collect *Lejeunea* species and check oil body characters to confirm identification.

Similar species This species tends to be larger than most of the other small, related species, with relatively smaller lobules and larger underleaves than *L. lamacerina* (p. 222) and *L. patens* (p. 223). The very rare *L. flava* subsp. *moorei* (Paton, p. 495) has more elliptical leaves, longer in proportion to their breadth than in *L. cavifolia*, and is restricted in the British Isles to south-west Ireland. Other related plants – *Aphanolejeunea* (p. 227), *Microlejeunea* (p. 220), *Drepanolejeunea* (p. 218), etc. – are usually much smaller, with differently shaped leaves, often longer and thinner or pointed.

Habitat *L. cavifolia* grows on rocks and trees in shaded and humid places, particularly woodland. It often creeps through other bryophytes.