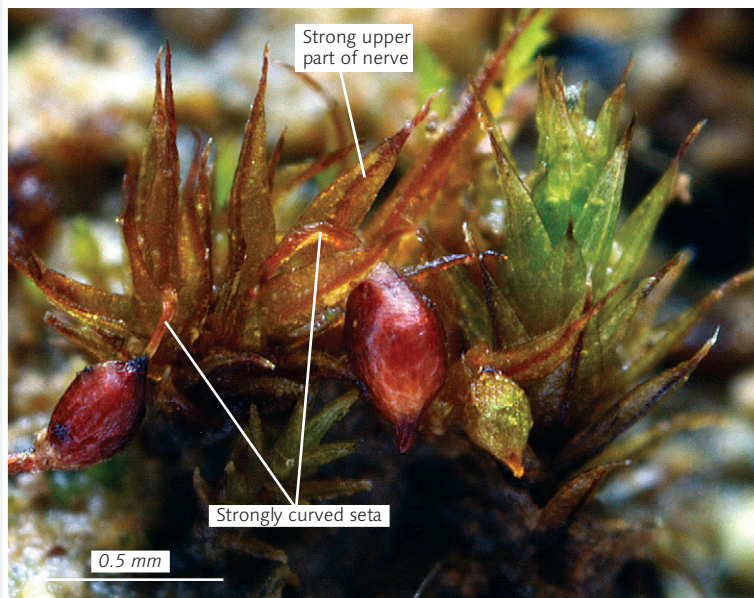
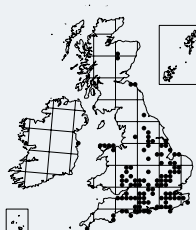


# *Microbryum curvicolle*

*Phascum curvicolle*

Swan-necked Earth-moss



**Identification** A very small (shoots 1.5–3 mm tall), ephemeral moss growing as scattered individuals or in small patches. Lower leaves are about 1 mm long, oblong to spearhead-shaped, while the upper leaves are longer (about 1.5 mm long) and narrowly spearhead-shaped. Leaf margins are recurved and the tip is longly tapering. The nerve is weak below, but strong above, and protrudes as a point beyond the tip of the leaf blade. The seta is strongly curved and 0.5–1.5 mm long. The egg-shaped capsules do not shed their lid, which has a short, oblique tip. The species is rarely encountered during summer, but from autumn to spring patches of the reddish-brown capsules may be visible from a couple of metres distance.

**Similar species** The very rare *Acalon triquetrum* (Smith p. 378) also has curved setae, but its capsules are more or less hidden by wide leaves. *Microbryum rectum* (p. 488) has straight setae. *Phascum cuspidatum* (p. 486) has extremely short (less than 0.5 mm) setae, with the capsule held upright at the centre of the plant.

**Habitat** A lime-loving moss that inhabits disturbed soil in a variety of habitats, most often in calcareous grassland and quarries, but also in arable fields and woodland rides.