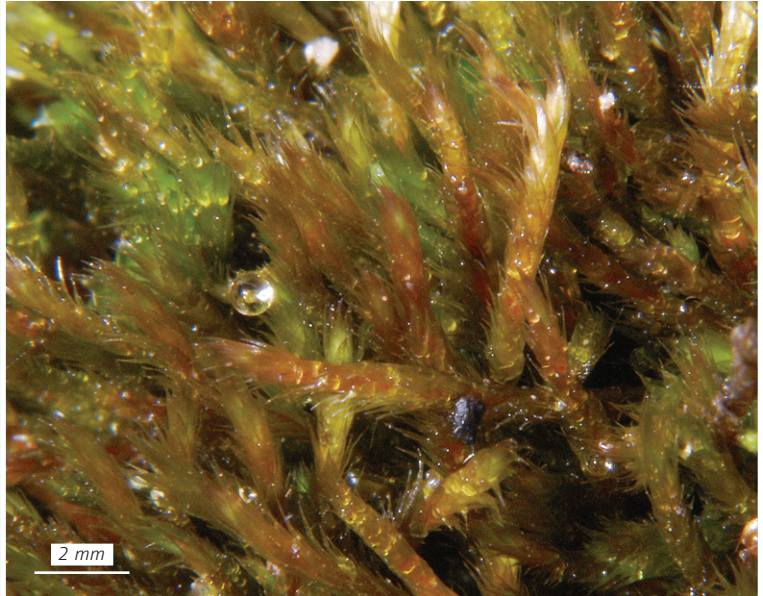
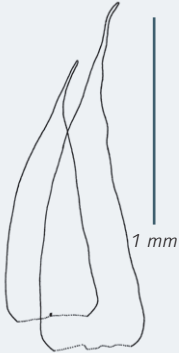
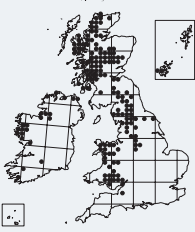


*Orthothecium intricatum*

Fine-leaved Leskea

**Identification**

This slender, green or usually pink-tinged moss holds its leaves erect or pointing at an angle of up to 20–45° from the stem when moist. They are usually slightly curved, and taper gradually to a long, fine point. The nerve is short and double, or absent. Capsules are very rarely produced. Shoots may grow to 2–3 cm long, and leaves are about 1–2 mm long.

**Similar species**

*O. rufescens* (p. 777) is a much larger species with pleated leaves. The usually smaller *Isopterygiopsis pulchella* (p. 787) grows in similar places to *O. intricatum*, but is never pink or red, has more widely spreading leaves, and often produces capsules.

**Habitat**

On moist, base-rich rock in overhangs and crevices, on limestone and on base-rich siliceous rocks; mainly upland.