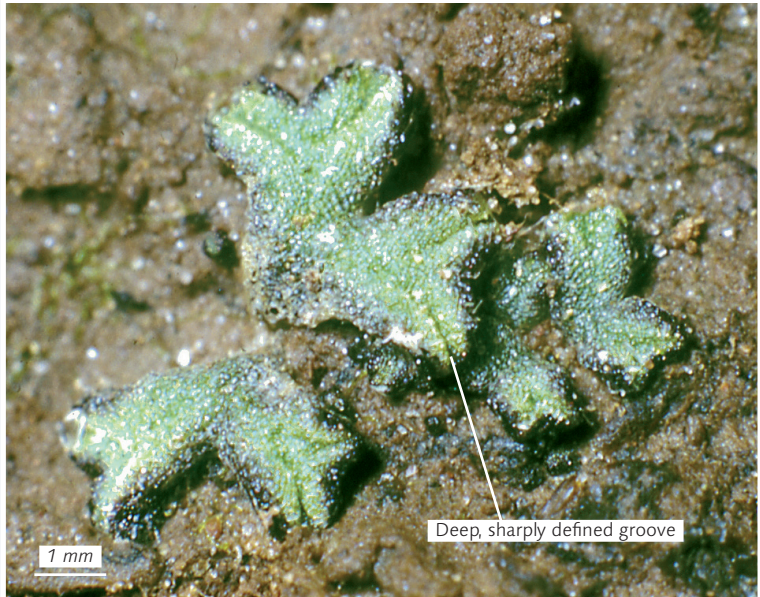
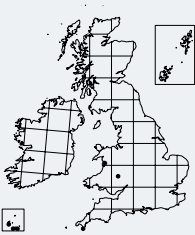


Riccia nigrella

Black Crystalwort



Identification This small liverwort grows in long-persistent rosettes or patches up to 15 mm across. Its thallus branches are up to 1.2 mm wide, dark green above with a bluish sheen, and with a deep, sharply defined median groove. Below the sharp thallus margins there is a line of dark purple or almost black ventral scales which become very conspicuous in dry conditions when the thallus margins inroll. Capsules are borne within older parts of the thallus.

Similar species *R. nigrella* is most similar to *R. sorocarpa* (p. 266) in its sharply grooved thalli, but the latter is easily distinguished by its larger size, paler colour and inconspicuous, colourless ventral scales under the thallus margins.

Habitat A rare, southern species that grows on soil in unshaded sites that often become very dry, such as cliff ledges, thin soil on rocks, wall tops, banks and footpaths.