

While there in youth,— the sweetest part
Of life,— with joy-believing heart,
They liv'd their own dear days, all fraught
With incidents for after-thought
In later life, when fancy brought
The outline of some faded face
Again to its forsaken place.
Come winter moss, creep on, creep on,
And warn me of the time that's gone.

Come where thou climbedst, fresh and free,
The grass-begloomed apple-tree
That, hardly shaken with my small
Boy's strength, with quiv'ing head, let fall
The apples we lik'd most of all,
Or elm I climb'd, with clasping legs,
To reach the crow's high-nested eggs.
Come winter moss, creep on, creep on,
And warn me of the time that's gone.

Or where I found thy yellow bed
Below the hill-borne fir-tree's head,
And heard the whistling east wind blow
Above, while wood-screen'd down below
I rambled in the spring-day's glow,
And watch'd the low-ear'd hares upspring
From cover, and the birds take wing.
Come winter moss, creep on, creep on,
And warn me of the time that's gone.

Or where the bluebells bent their tops
In windless shadows of the copse;
Or where the misty west wind blew
O'er primroses that peer'd out through
Thy bankside bed, and scatter'd dew
O'er grey spring grass I watch'd alone
Where thou had grown o'er some old stone.
Come winter moss, creep on, creep on,
And warn me of the time that's gone.

Rare and interesting bryophytes in Britain and Ireland

Mark O. Hill

*CEH Monks Wood, Abbots Ripton, Huntingdon, Cambs, PE28 2LS;
moh@ceh.ac.uk*

Categories of interesting record

A *Altitude*, **D** *Dispersing*, **F** *Fruiting*, **G** *Gametangia*, **H** *Habitat*, **N** *Nationally rare*, **P** *Previously under-recorded*, **R** *Regionally rare*, **S** *Status report*, **V** *Vegetatively reproducing*. For a fuller explanation of categories refer to Hill (2006).

Liverworts

23.10. *Lophozia capitata*. 17: on sandy wet heathland under

heather with *Cephaloziella rubella*, 20 m alt., Wisley Heath, TQ068587, 2006, Wallis, conf. Matcham. First record for the county since 1970 of this sporadic and rare plant. **N**.

Mosses

13.1. *Pseudephemerum nitidum*. 59: on open silty sand, pH 5.6, margin of reservoir, with *Archidium alternifolium*, *Bryum klinckgraeffii*, *B. tenuisetum*, *Hypnum cupressiforme*, *Pohlia bulbifera*, *Pohlia wahlenbergii* and *Riccia huebeneriana*, 140 m alt., Anglezarke Reservoir,

SD61491723, 2006, Callaghan. First British record of tubers (Figure 1), conf. Preston. Tubers 90-170 × 52-92 µm, 1.4-2.3 times as long as wide, were abundant on vegetative shoots and on shoots with immature capsules, conforming well to the description by Arts & Risse (1991) of 'a rare tuber-bearing variant' of this species. **V.**

21.3. *Cynodontium jeneri*. 93: SW-facing rock outcrop, 250 m alt., Den of Wraes, The Shevock, NJ5731, 2006, Bosanquet & Preston. The second vice-county record of a nationally scarce species. **N.**

35.1. *Octodicerias fontanum*. 17: abundant on concrete and stone structures at and below the waterline, 10 m alt., River Thames near Staines, between Bell Weir TQ015722 and Penton Hook TQ042696, 2006, Lansdown. First record from this stretch of the river since 1926, though found in 1995 in a nearby canal. **N.**

38.10. *Weissia sterilis*. 17: soil patches in calcareous grassland, 125 m alt., Mole Gap to Reigate Escarpment SSSI, edge of the Dawcombe LNR, TQ217524, 2006, Wallis. First record for the county since 1976. **N.**

42.1. *Pleurochaete squarrosa*. 69: On small limestone exposures, steep S-facing roadside bank sheltered from the north and east by a high drystone wall, with *Scleropodium purum* and *Entodon concinnus*, 130 m alt., Brigsteer Brow, Brigsteer, SD486893, 1999, Raistrick. Most northerly recent record in Britain. **R.**

62.2. *Henediella macrophylla*. 20: in clay dumped to prevent flooding, 90 m alt., by River Gade, Gadebridge Park, Hemel Hempstead, TL053078, 2005, Tipper. Sterile and without associated species. The four Hertfordshire records suggest that it is beginning to spread more widely in SE England away from the Thames. **D.**

62.2. *Henediella macrophylla*. 20: soil on track under trees, 115 m alt., near Bury Hill, Hemel Hempstead, TL049074, 2005, Tipper. With abundant swollen, but still green capsules in May 2005. Growing with *Didymodon sinuosus*, *Barbula unguiculata* and *Kindbergia praelonga*. **D,F.**

62.2. *Henediella macrophylla*. 20: baresoil low on roadside hedgebank, 100 m alt., Dodds Lane, Hemel Hempstead, TL052095, 2005, Tipper. Sterile and without associated

species. **D.**

62.2. *Henediella macrophylla*. 20: on bare soil low on roadside hedgebank, 90 m alt., Bank Mill Lane, Berkhamstead, TL006072, 2006, Tipper. Abundant, with *Barbula unguiculata*, *Fissidens bryoides* and *Kindbergia praelonga*. **D.**

62.2. *Henediella macrophylla*. 93: a few stems on shaded pathside in parkland, 180 m alt., SW side of Leith Hall, NJ5429, 2006, Bosanquet & Preston. The third vice-county record of a species that is not otherwise recorded from NE Scotland. Like one of the other sites, Fyvie Castle, this is a National Trust for Scotland property. **D,R.**

62.3. *Henediella heimii*. 20: on an otherwise bare, silty and gritty low bank on the very edge of the road above a low (ca. 12 cm) kerb sloping at an angle of 45°, 100 m alt., A4146 road, Water End, north of Hemel Hempstead, TL044100, 2006, Tipper. Large patches for some 10 m, with young capsules, which had dehisced when re-examined in late May. The three Hertfordshire records are apparently the first of its occurrence by salted roads in Britain. **H.**

62.3. *Henediella heimii*. 20: on otherwise bare silty and gritty soil on a bank above a low kerb, on a moderate south-facing hill, 95 m alt., A4146 road, Piccotts End, north of Hemel Hempstead, TL047093, 2006, Tipper. Small quantity, the capsules swollen and brown in March. All the plants had disappeared by late May. **H.**

62.3. *Henediella heimii*. 20: on N-facing, but kerbless bank by the road, sheltered by a thick hedge, 95 m alt., B489 road, Wilstone, northwest of Tring, SP901134, 2006, Tipper. In scattered small patches for some 200 m. A very slight gradient possibly concentrated the salt and water. No other plants were growing with it. **H.**

62.3. *Henediella heimii*. 93: on flat, periodically flooded quarry floor, with *Bryum bicolor*, *Cratoneuron filicinum*, *Didymodon tophaceus*, *Juncus ambiguus* and *Sagina maritima*, 60 m alt., Aikey Bray Quarry W of Old Deer, NJ962478, 2006, Bosanquet & Preston. Frequent plants, some with ripe capsules. An unusual inland occurrence, some 16 km from the sea, of this normally coastal species, in a site used until 1992 for the bulk storage of rock salt. **H.**

70.11. *Racomitrium ericoides*. 38: on decaying concrete of disused airfield, 130 m alt., Honiley, SP228738, 2006, Turner & Flanagan, conf. Blockeel. First Warwickshire record since 1965 of a species that is very rare in the English Midlands. **R.**

80.2. *Physcomitrium eurystomum*. 28: on mud by pond, with *Aphanorhegma patens* and *Riccia cavernosa*, 45 m alt., Wicken Pond, Syderstone, TF83573142, 2006, Dunster, conf. Stevenson. First record of this exceptionally rare ephemeral outside Breckland since 1969. **N.**

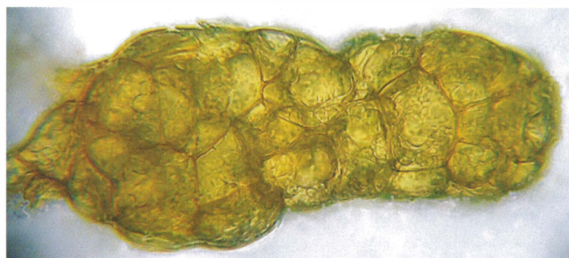


Figure 1. Rhizoidal tuber of *Pseudephemerum nitidum* from Lancashire. Photo: Des A. Callaghan.

- 117.7. *Orthotrichum obtusifolium*. 93:** on trunks of at least three *Acer platanoides* trees (frequent on one), frequent on a very old *Acer pseudoplatanus* and four tufts seen on a non-native *Quercus* species, parkland, 180 m alt., Leith Hall, NJ5429, 2006, Bosanquet & Preston. Confirmation of the continued presence of this rare species at the site where it was first found in 1990. None of these hosts is cited for *O. obtusifolium* in the *Atlas of Bryophytes* although the original find at Leith was from an old *A. S.*
- 117.12. *Orthotrichum stramineum*. 93:** intimately mixed with *Grimmia pulvinata*, mostly under shade of *Ulmus glabra*, on sandstone parapet of bridge, 25 m alt., B9025 crossing over R. Deveron, W of Turriff, NJ713503, 2006, Bosanquet & Preston. Apparently very rare on rock or stonework; this habitat is not mentioned in the *Atlas of Bryophytes* nor in the later floras consulted by the finders. **H.**
- 119.1.a. *Hedwigia ciliata* var. *ciliata*. 40:** On a west facing rock exposure, 105 m alt., grounds of Haughmond Abbey, SJ542152, 2006, Godfrey. 2nd County record. Several quite large tufts; many of the upper leaves have short hyaline apices. **N.**
- 153.5. *Amblystegium humile*. 11:** Small population on vertical stone bank, 45 m alt., R. Itchen in Winchester, SU486295, 2006, Lansdown, conf. Rumsey. Uncommon plant with few Hampshire records. **R.**
- 153.5. *Amblystegium humile*. 17:** Large fruiting population on the concrete sill of weir, 10 m alt., Bell Weir, R. Thames near Staines, TQ015722, 2006, Lansdown. Not seen in this part of the Thames since 1981; population would normally be submerged in fast-flowing, shallow water but was exposed at the time of the record. **R.**
- 160.2. *Sanionia orthothecioides*. 111:** on high grassy cliff top exposed to salt spray with *Anthyllis vulneraria*, *Hypnum cupressiforme* and *Homalothecium sericeum*, 80 m alt., Mawick Head, Orkney, HY22852575, 2006, Porley & Hodgetts, conf. Rothero. First report from Britain of sporophytes (Figure 2), which are not uncommon in Scandinavia, in this autoicous Boreo-arctic Montane species. Several sporophytes were seen on 10 July on the Mawick Head material, some with the calyptra intact and just emerging from perichaetium, and some with an elongated seta supporting a green immature capsule minus calyptra. A few had setae without capsules (apparently bitten off). A St. Kilda specimen bears an old perichaetium that may formerly have contained a capsule (Long, 1992). Depauperate material with remains of what are probably setae has been observed on Fair Isle (Rothero, pers. comm.). **F.**
- 164.4. *Calliergon giganteum*. 40:** By a rather mirey woodland pond, 100 m alt., close to Haughmond Abbey,

SJ542158, 2006, Godfrey. A few shoots in the colony had numerous capsules, nearly ripe, with spores 19-20 µm, on 24 May. The fertile shoots were larger than the average, but still with the standard 'Christmas tree' habit of *C. giganteum*. **F.**

- 194.1. *Rhytidiadelphus triquetrus*. 107:** steep rocky river bank, 140 m alt., River Brora near West Langwell, NC714101, 2006, Fisk. Capsules are rare in most parts of Britain; four or five stems had capsules and in each case there were three or four setae grouped very close together. **F.**

Contributors of records and people who have checked them

S.D.S. Bosanquet, D.A. Callaghan, C. Dunster, R.J. Fisk, J. Flanagan, M. Godfrey, N.G. Hodgetts, R.V. Lansdown, H.W. Matcham, R.D. Porley, C.D. Preston, K. Raistrick, G.P. Rothero, F.J. Rumsey, C.R. Stevenson, C.T.W. Tipper, J. Turner, H.W. Wallis.

References

- Arts T, Risse S. 1991.** Tubers in *Pseudephemerum nitidum* (Hedw.) Reim. *Lindbergia* **17**: 55-58.
- Hill MO. 2006.** Rare and interesting bryophytes in Britain and Ireland. *Field Bryology* **89**: 43-45.
- Long DG. 1992.** *Sanionia orthothecioides* (Lindb.) Loeske in Scotland, new to the British Isles. *Journal of Bryology* **17**: 111-117.



Figure 2. Young capsule and two bitten-off setae of *Sanionia orthothecioides* from Orkney. Photo: Ron D. Porley.